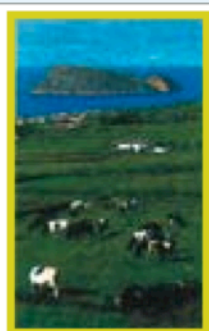
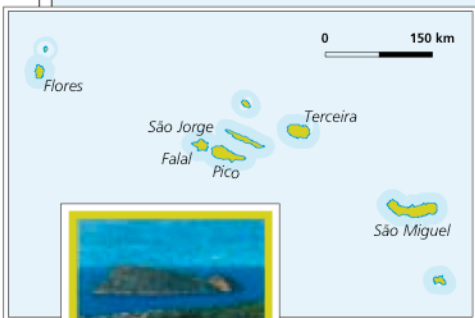


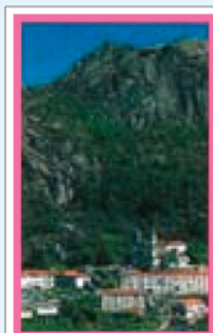
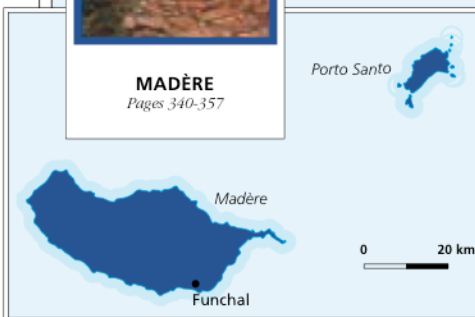
Portugal région par région



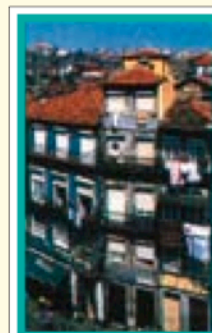
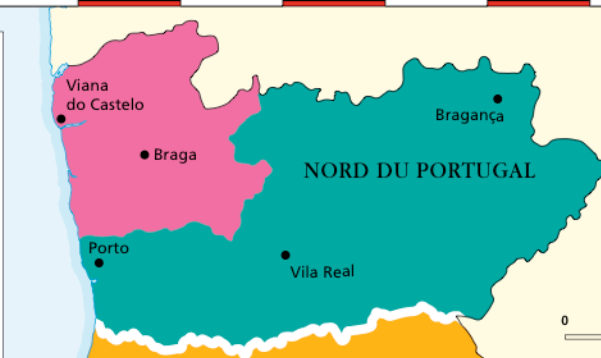
LES AÇORES
Pages 358-371



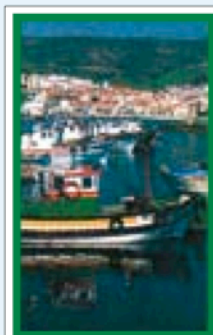
MADÈRE
Pages 340-357



MINHO
Pages 262-281



DOURO ET TRÁS-OS-MONTES
Pages 232-261



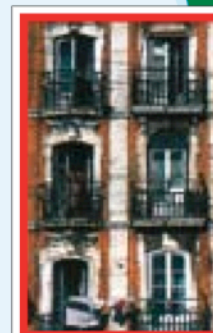
LA CÔTE DE LISBONNE
Pages 148-169



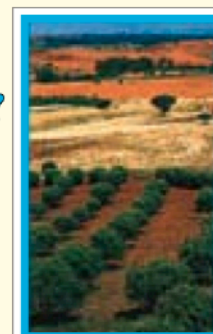
ESTREMADURA ET RIBATEJO
Pages 170-193



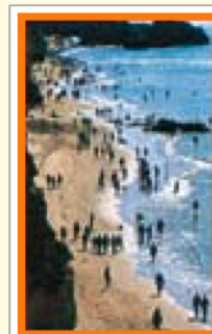
LES BEIRAS
Pages 194-221



LISBONNE
Pages 58-139



ALENTEJO
Pages 290-313



ALGARVE
Pages 314-331

