

Londres quartier par quartier



PAGES 228-235
Plans
1-2

Hampstead



PAGES 236-243
Plans
3-4, 11-12

Greenwich et
Blackheath



PAGES 220-227
Plans
3-4, 11-12

Regent's Park
et
Marylebone



PAGES 98-109
Plans
12-13

Bloomsbury
et
Fitzrovia



PAGES 120-131
Plans
4-5, 13

Soho et
Trafalgar
Square

Covent
Garden
et le
Strand



PAGES 110-119
Plans
13-14

Smithfield
et
Spitalfields



PAGES 132-141
Plans
5-6, 13-14



PAGES 160-171
Plans
6-7, 14, 16



PAGES 142-159
Plans
14-16



PAGES 214-219
Plans
9-10, 17



Kensington
et
Holland Park

South Kensington
et
Knightsbridge

Piccadilly
et
St James's

Whitehall et
Westminster



PAGES 198-213
Plans
10-11, 18-19

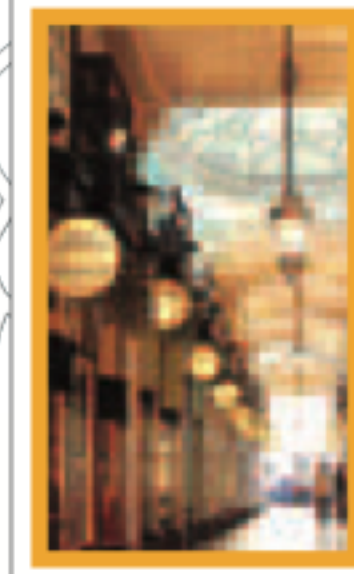


PAGES 192-197
Plans
18-19

Chelsea



PAGES 68-85
Plans
13, 20-21



PAGES 86-97
Plans
12-13, 20



PAGES 184-191
Plans
13-14, 21-22



PAGES 172-183
Plans
6, 16

